



Packet Power[®] Smart Power Cables

Product Specification

Packet Power **Smart Power Cables** provide an easy way to gather power consumption data from nearly any device with a plug.

Overview

Our Smart Power Cables feature the same power monitoring components found in many smart meters packaged in an easy-to-install format—a power cord. When plugged in, the cables automatically begin to capture detailed information on power usage. They detect other nearby smart power cables and automatically form a wireless network to allow easy sharing of information. Add or remove a smart power cable and the system automatically adapts.

Power usage information can be routed to local monitoring applications or sent to Packet Power's Energy Analysis System. This makes it possible to quickly deploy an advanced power monitoring infrastructure with minimal disruption and limited need for IT resources and expertise.



3-Phase and Single-Phase Models

Key features

- Precisely measures power and temperature from just a few or thousands of cables
- Captures detailed, time-stamped data on amps, volts, watts, watt-hours, volt-amps reactive, power factor, frequency, spikes and sags
- Supports single-, two- and three-phase power in 110 to 240 VAC, 50 to 60 Hz, and 10 to 100 amps.
- Incorporates advanced security features throughout the system
- Maintains key data during power and communications disruptions
- Fail-safe design will not disrupt the flow of power
- Packet Power software provides flexible, web-based reporting and alerts
- Interfaces to other monitoring applications in TXT, HTML, CSV, XML or SNMP formats
- Certified for use in the US, Canada, the European Union, Australia and South Africa.



Electronic Environments
Infrastructure Solutions

www.eecnet.com

info@eecnet.com

800.342.5332

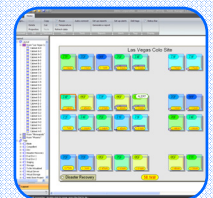
Summary

- Easily capture and analyze power usage data
- Simple “plug and play” installation
- Self-configuring wireless mesh network
- Small Ethernet Gateway gathers data from hundreds of power cables and Environmental Monitors
- System requires just one Ethernet port and IP address
- Complete Energy Analysis System offers cloud-based reporting and analysis applications, secure data storage and fast, simple installation
- Access data via reports, web portals or XML
- Local deployment option supports SNMP interface to an existing monitoring application

Wireless Data Network



Monitoring and Analysis Options



Standard Connector Types

NEMA 120V	NEMA 208V	IEC 60320 208-240V
5-15	6-20 / L6-20	C13 / C14
5-15 to C13	L6-30	C19 / C20
5-20 / L5-20	L15-20, -30	60309 Pin and Sleeve
5-30 / L5-30	L21-20, -30	

We also produce cables using Hubbell[®], RussellStoll[®], Europlug and many country-specific connector types.

Cables are for indoor use only on properly protected circuits. Each Smart Power Cable will typically link to other cables or Environmental Monitors over distances of 50 to 200+ feet.

